



MATERIAL

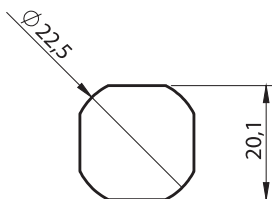
- Housing:** Polyamide (PA6 GFR30), black / Zinc die chrome plated or black coated
- Insert :** Polyamide (PA6 GFR30), black / Zinc die chrome plated or black coated
- Nut :** Plastic / Zinc die
- Cam :** Plastic / Steel, zinc plated

OPTIONS

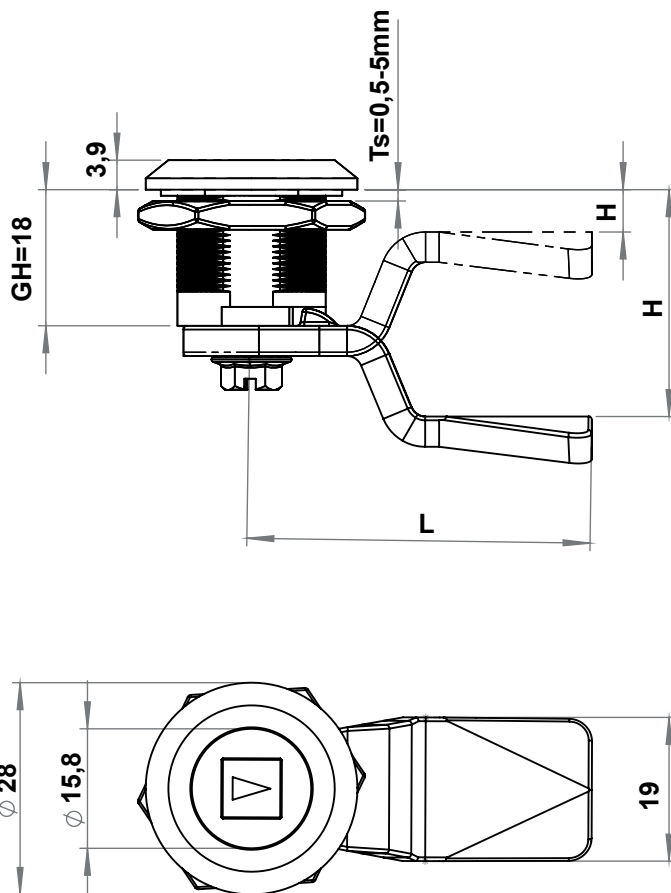
- Cams :**
- Keys :**

* Stainless Steel versions is available


















CUTOUT



IP 65  LH/RH  RoHS 



1800 - Quarter Turn GH=18

	Insert Types	Plastic (PA)	Zinc die Chrome Plated	Zinc die Black Coated
	Double Bit 3 mm	1810 - 101 - xxx	1820 - 201 - xxx	1830 - 301 - xxx
	Double Bit 5 mm	1810 - 102 - xxx	1820 - 202 - xxx	1830 - 302 - xxx
	Triangular 7 mm	1810 - 107 - xxx	1820 - 207 - xxx	1830 - 307 - xxx
	Triangular 8 mm	1810 - 103 - xxx	1820 - 203 - xxx	1830 - 303 - xxx
	Triangular 9 mm	1810 - 109 - xxx	1820 - 209 - xxx	1830 - 309 - xxx
	Triangular 10 mm		1820 - 213 - xxx	1830 - 313 - xxx
	Triangular 10mm M5 Threaded		1820 - 216 - xxx	1830 - 316 - xxx
	Square 6 mm	1810 - 115 - xxx	1820 - 215 - xxx	1830 - 315 - xxx
	Square 7 mm	1810 - 104 - xxx	1820 - 204 - xxx	1830 - 304 - xxx
	Square 8 mm	1810 - 105 - xxx	1820 - 205 - xxx	1830 - 305 - xxx
	Square 8 Slotted		1820 - 211 - xxx	1830 - 311 - xxx
	Square 10mm		1820 - 222 - xxx	1830 - 322 - xxx
	Slotted	1810 - 108 - xxx	1820 - 208 - xxx	1830 - 308 - xxx
	Eastern Europe	1810 - 110 - xxx	1820 - 210 - xxx	1830 - 310 - xxx
	Hexagon 5 mm		1820 - 214 - xxx	1830 - 314 - xxx
	Hexagon 8 mm	1810 - 106 - xxx	1820 - 206 - xxx	1830 - 306 - xxx
	Fiat		1820 - 212 - xxx	1830 - 312 - xxx

You may chose the XXX section from tables of cams with stoper.