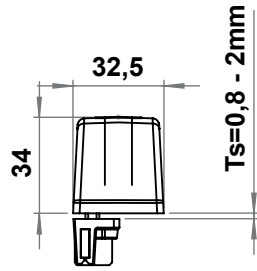
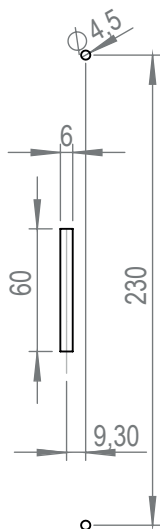
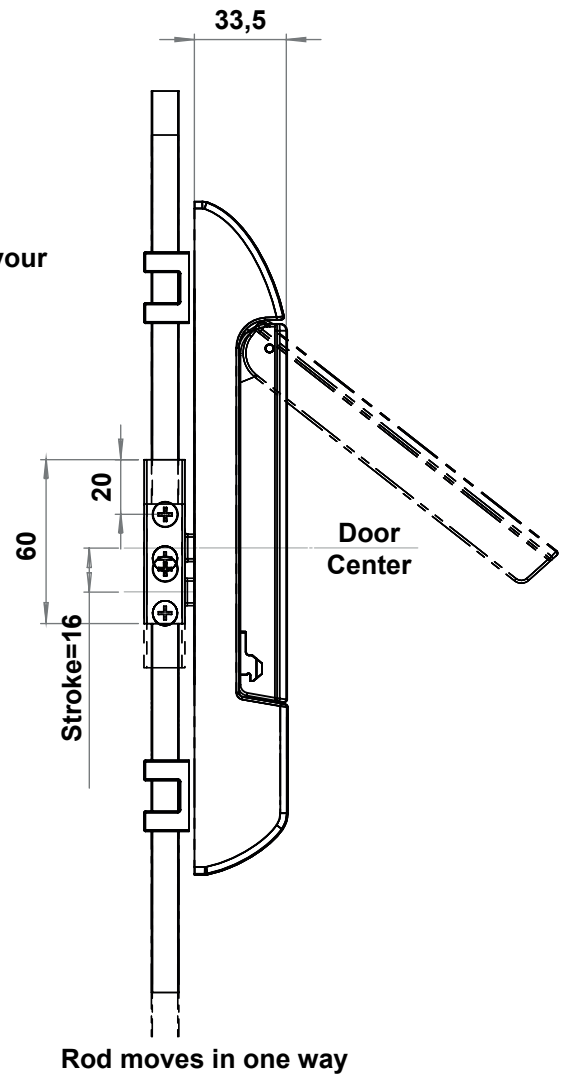
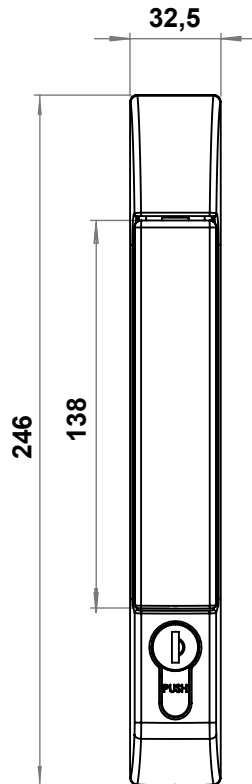


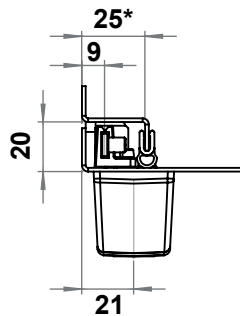
CUTOUT



Please contact us for your other Ts requests

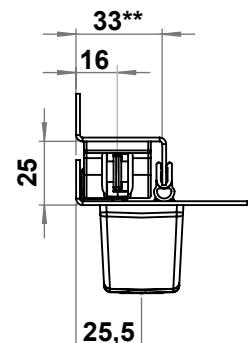


3x10 Rod Application

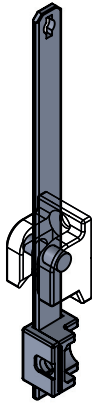


The dimension is determined together with the self gripping seal 6935-100. If the seal is not used, than the dimension will be 22mm

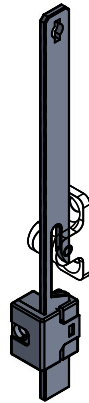
3x14 Rod Application



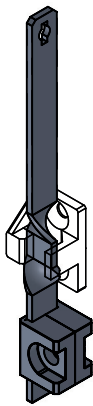
The dimension is determined together with the self gripping seal 6935-100. If the seal is not used, than the dimension will be 30mm



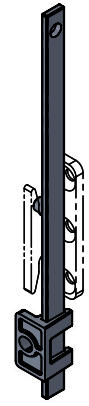
**8401 Rod
8510 Rod Catcher**



**8402 Rod
8513 Rod Catcher**



**8409 Rod
8516 Rod Catcher**



**8417 Rod
8517 Rod Catcher**



Linear Locking Systems

MATERIAL

- Housing** : Zinc die, black coated
- Handle** : Zinc die, black coated
- Padlock Device** : Stainless steel AISI 304

OPTIONS

- Flat Rods** :
- Flat Rod Guides** :
- Rod Catchers** :

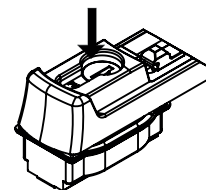
2682 - Plain

		3x14 According to Rod	3x10 According to Rod
	Keyed 3333	2682 - 713	2682 - 753
	Keyed Same	2682 - 717	2682 - 757
	Keyed Differ	2682 - 719	2682 - 759

2682 - Padlock Applicable

		3x14 According to Rod	3x10 According to Rod
	Keyed 3333	2682 - 813	2682 - 853
	Keyed Same	2682 - 817	2682 - 857
	Keyed Differ	2682 - 819	2682 - 859

PUSH LOCK



If the key is at "open" position, the handle is opened by pushing the cylinder

If the key is at "closed" position, the handle can not be opened.

