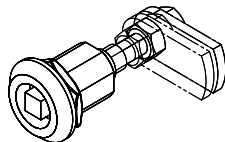
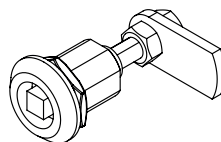


The first 90° turn, rotates the cam



With the second 90° turn, the cam moves 6mm front



The quarter turn is locked.

Suitable Cams	Item Number	XXX	CH (mm)	L (mm)	H Min	H Max
	1900-941	941	0	33	41	58
	1900-942	942	14	33	27	72
	1900-943	943	27,5	33	13,5	85

### 1045 - Compression Latch

	Insert Types	Zinc die Chrome Plated	Zinc die Black Coated
	Double Bit 3 mm	1045 - 201 - xxx	1045 - 301 - xxx
	Double Bit 5 mm	1045 - 202 - xxx	1045 - 302 - xxx
	Tabular	1045 - 20T - xxx	1045 - 30T - xxx
	Triangular 8 mm	1045 - 203 - xxx	1045 - 303 - xxx
	Triangular 9 mm	1045 - 209 - xxx	1045 - 309 - xxx
	Square 7 mm	1045 - 204 - xxx	1045 - 304 - xxx
	Square 8 mm	1045 - 205 - xxx	1045 - 305 - xxx
	Slotted	1045 - 208 - xxx	1045 - 308 - xxx
	Eastern Europe	1045 - 210 - xxx	1045 - 310 - xxx
	Hexagon 8 mm	1045 - 206 - xxx	1045 - 306 - xxx

You may chose the XXX section, on the side of the page.



Quarter Turns

### MATERIAL

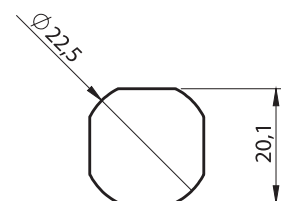
- Housing:** Zinc die, chrome plated or black coated
- Insert :** Zinc die, chrome plated or black coated
- Nut :** Zinc die, zinc plated
- Cam :** Steel, zinc plated

### OPTIONS

- Cams :**
- Keys :**

\* Stainless Steel version is available

### CUTOUT



IP 65



LH/RH

RoHS