

Quarter Turns

### MATERIAL

**Housing:** Polyamide (PA6 GFR30), black  
**Insert :** Polyamide (PA6 GFR30), black / Zinc die chrome plated or black coated  
**Nut :** Plastic  
**Cam :** Plastic / Steel, zinc plated

### OPTIONS

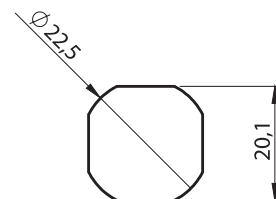
**Cams :**  
**Keys :**

### 1345 - Self fingerpull Quarter Turn

	Insert Types	Plastic (PA)
	Double Bit 3 mm	1345 - 101 - xxx
	Double Bit 5 mm	1345 - 102 - xxx
	Triangular 7 mm	1345 - 107 - xxx
	Triangular 8 mm	1345 - 103 - xxx
	Triangular 9 mm	1345 - 109 - xxx
	Square 6 mm	1345 - 115 - xxx
	Square 7 mm	1345 - 104 - xxx
	Square 8 mm	1345 - 105 - xxx
	Slotted	1345 - 108 - xxx
	Eastern Europe	1345 - 110 - xxx
	Hexagon 8	1345 - 106 - xxx

You may chose the XXX section from tables of cams with stoper.

### CUTOUT



IP 65



LH/RH

RoHS