

Quarter Turns

MATERIAL

Housing: Zinc die, Chrome plated or
Black coated
Nut : Zinc die, Zinc plated
Cam : Steel, Zinc plated

OPTIONS

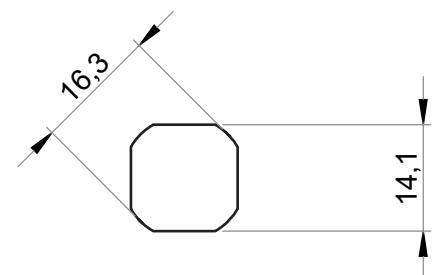
Cams :

1891 - Keyed Quarter Turn GH=13

	Zinc die, Chrome plated	Zinc die, Black coated
Keyed Same	1891 - 910 - xxx	1891 - 920 - xxx
Keyed Differ	1891 - 919 - xxx	1891 - 929 - xxx

You may chose the XXX section, on the side of the page.

CUTOUT



IP 44



LH/RH

RoHS