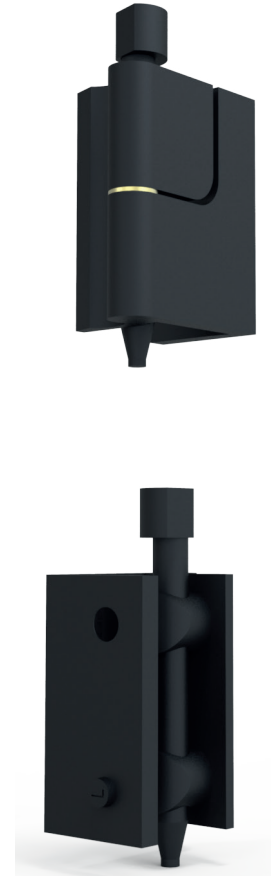


Door can be taken out if the hinge turns 70°

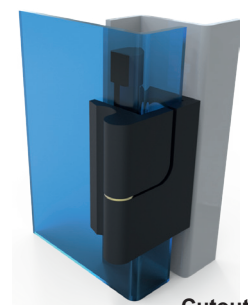
3055 - 180° Hinge

	Zinc die, Black coated	Zinc die, Chrome plated
--	---------------------------	----------------------------



### MATERIAL

- Housing : Zinc die, chrome plated or black coated
- Pin 1 : Steel, zinc plated
- Pin 2 : Polyamide (PA), black
- Washers : Brass



Cutout

